



PRODUCT CATALOGUE 2024



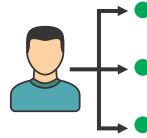
AIRLESS SPRAY SYSTEM

THE PILOT INDIA GROUP AT A GLANCE

70
Years of
brand trust



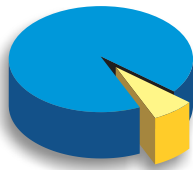
700
Dealers
7000
Sub Dealers



3 Business
verticals



Dominant
Market share



Conformity to
European Standards

Certification

STATE - OF - THE - ART MANUFACTURING

What started then, more than seven decades ago, as a small organization has today become The PILOT INDIA Group. It's a conglomerate of several companies manufacturing and marketing industrial, textile & office automation products under the brand name - PILOT.

All developing & growing markets require changes in modern times. Companies are planning out newer ways of selling their products to the international market.

So is the case with The Pilot India Group, with its products being exported to many countries in Europe, Middle-East, Africa, Asia and Australia.

Continuing with the tradition, this year too Pilot India is introducing several new products. Another year, another launch-but the motto remains the same.

Pilot India tries all the time so that you excel every time.



Pilot Group has been a pioneer in the field of a variety of industrial products for over 7 decades. The Group's success is attributed to its ability to understand specific business and industrial needs and provide products of such quality that require little or no maintenance.

The Pilot Group has always been obsessed with quality, aiming for higher perfection every time. This along with competitive pricing has earned them recognition in international markets.

Exports to

5 countries

- Bangladesh
- Oman
- Saudi Arabia
- Sri Lanka
- United Arab Emirates



Made in India



Electric Series

Electric Series



Areas of application



Interior wall painting



Exterior Painting



Structural fabrication



Industrial painting



Paints & protective coatings



Architectural Painting

ELECTRIC SERIES

Compact, rugged and reliable solution specially developed for professional painting contractors.

Indigenous 1.5KW brushless DC electric motor and smart drive controller with digital display.



Tungsten carbide valve seats, hard coated piston and cylinders.

Stainless steel filter element for multiple and long usage.

Quick open suction valve for easy and fast cleaning.

Divorced pressure potentiometer for undisturbed spray pressure settings

Inbuilt dry run, voltage and current protection.

A fully indigenously designed and manufactured electric airless sprayer

Digital interface to display real time operating instructions, faults & pressures.

PE051 - Stand version / Trolley version



TECHNICAL DATA

Model	PE051 - Stand version / Trolley version
Max. Flow rate	3.9 litres/min
Max. Working pressure	230 bar
Ele. Motor	1500 watt (2HP) Brushless DC
Power Supply	230V 16A single phase



Pneumatic Series

Pneumatic Series



Areas of application



Marine



Ship painting



Industrial painting



Pipe & other protective coating



PEB & industrial structural fabrication



Railway

PNEUMATIC SERIES

Powerful, compact and budget friendly solution for spraying a wide range of paints and protective coatings. Sprays most Industrial coatings with multiple guns comfortably. Ideal for tough epoxy / pu protective coatings with high solids upto 100%. Used in spraying almost all architectural coatings including cement based putty. **Unmatched performance with PILOTs Proprietary Super Breath Air Motor Technology.**



Durable pump section

- Large paths to handle high solids
- Long stroke-slow wear fluid section
- Rust proof Stainless steel body
- Hard coated piston and cylinder
- Tungsten carbide valve seats

Easily accessible and quick to clean filter with Extra-large filtration area for less tip blockage and improved finish quality.

Quick open suction valve for easy and fast cleaning.

Robust tilting cart for easy and comfortable transportation with large pneumatic tyres.

Option of solid rubber tyres is available on request.

Exclusive features

Revolutionary

SUPER BREATH AIR MOTOR TECHNOLOGY*.

LESS PULSATION Smooth, rapid, sharp changeover even at high flow rates

STALL FREE OPERATION due to EXPONENTIAL AIR DRIVE SYSTEM

No spring loaded detents or sensing/poppet valves

ICING FREEDOM - Zero effect due to icing.

Uninterrupted performance

*Patent pending

- Enhanced capacity of around 4X higher Intake / Exhaust air valve with EXPONENTIAL AIR DRIVE SYSTEM.
- Large flow path in fluid section to handle high solids, 100% solids and solvent free coatings.

Spray Gun Features:

- light weight, ergonomically designed spray gun.
- Stainless steel pressure chamber and wetted parts.
- Easy to maintain and service.

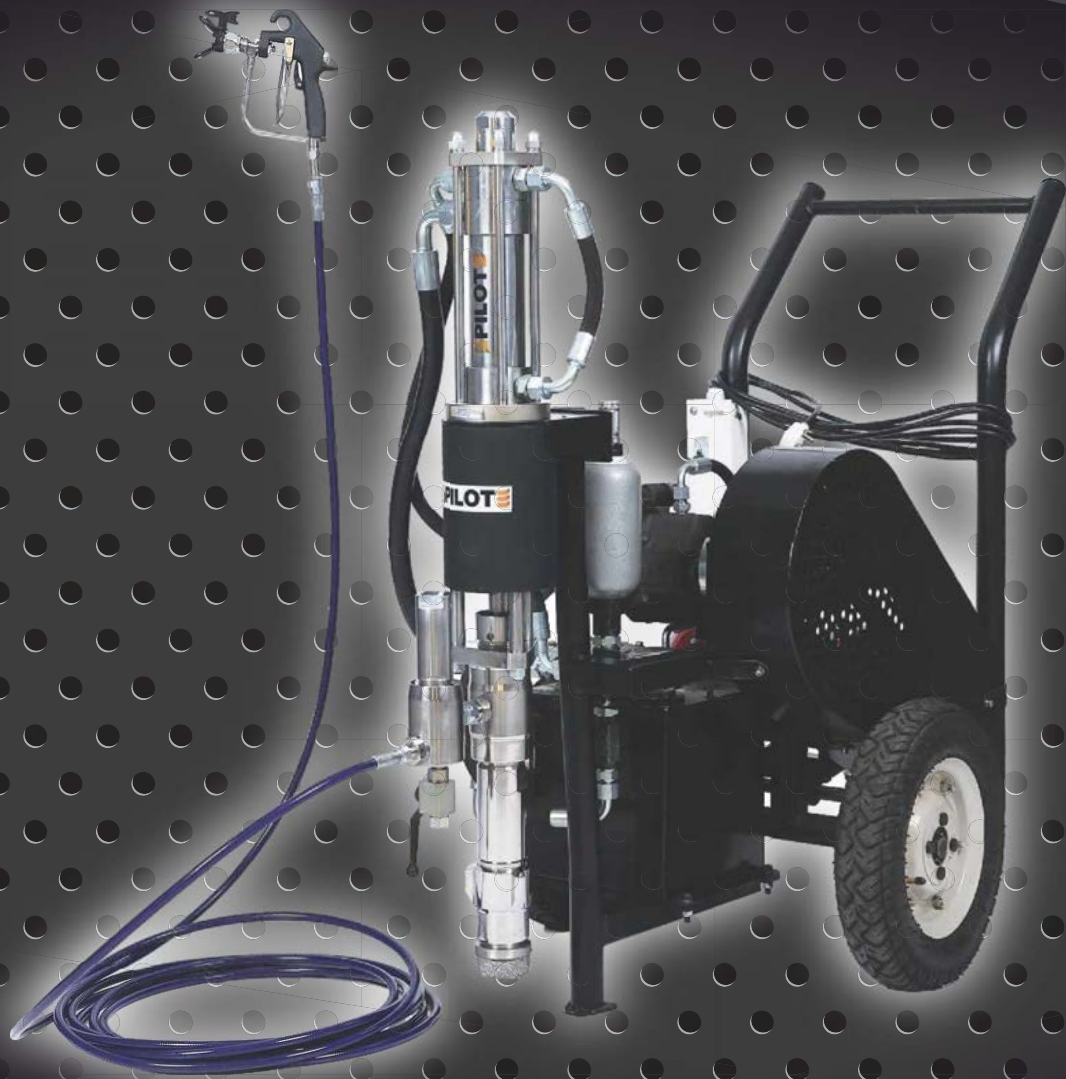
PP38, PP48, PP63, PP68, PP79



TECHNICAL DATA

	PP38	PP48	PP63	PP68	PP79
Pump ratio	38:1	48:1	63:1	68:1	79:1
Maximum working pressure	266 bar	336 bar	441 bar	476 bar	553 bar
Maximum air input pressure	7 bar	7 bar	7 bar	7 bar	7 bar
Output Flow max. recommended	11.4 Lpm	9.6 Lpm	7.2 Lpm	11.4 Lpm	9.6 Lpm
Air consumption per one litre of output spray volume in CFM#	1.75	1.95	2.75	2.95	3.25

-SCFM required for particular application dependent on operating pressures and flow rates.



Electro Hydraulic Series

Electro Hydraulic Series



Areas of application



Water proofing materials



Putty / Airless plasters



Paints & protective coatings



Road marking & curb coatings



Grouting chemicals



Flooring and roof coatings

ELECTRO HYDRAULIC SERIES

Indigenously designed all in one solution for professional contractors. Ideal for building painting, waterproofing, grouting and flooring applications. The best choice for cement based wall putty spraying. Works on single phase electric power supply. **Featuring PILOTs Proprietary Springless Hydraulic Motor.**



Maximal solution for Architectural applications and painting contractors.

Cement based putty can be sprayed easily.

Works on single phase 230V 16A power supply.

Only springless stall-free hydraulic motor on the planet. Rapid & sharp changeover with less pulsation

Robust cart for easy and comfortable transportation.

Durable pump section

- Large paths to handle high solids
- Long stroke-slow wear fluid section
- Rust proof Stainless steel body
- Hard coated piston and cylinder
- Tungsten carbide valve seats

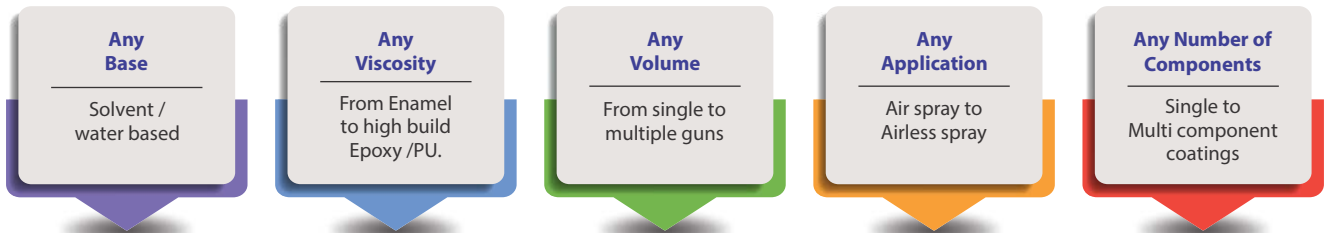
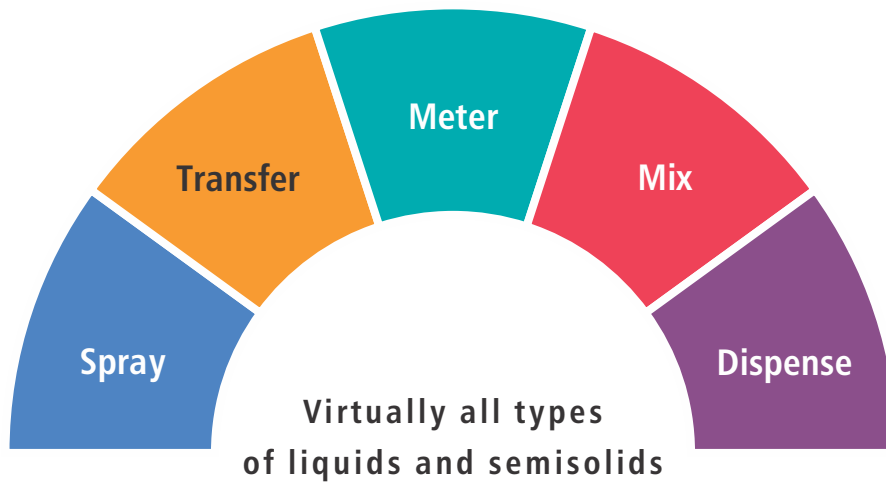
Easily accessible and quick to clean filter with Extra-large filtration area for less tip blockage and improved finish quality.

Quick open suction valve for easy and fast cleaning.

TECHNICAL DATA

Model	PEH2261	PEH2243	PEH3071	PEH3043
Power supply	230V AC single phase		415V AC Three phase	
Electric motor	3 Hp		4 hp	
Max.flow (Lpm)	6.1	4.3	7.1	4.3
Max pressure (Bar)	276	364	288	448

As we step into the Research & Development of Fluid Handling Systems, here's how we see our future



with various types of pumps, guns and accessories.

Accessories



Spray Guns



Turn clean nozzle



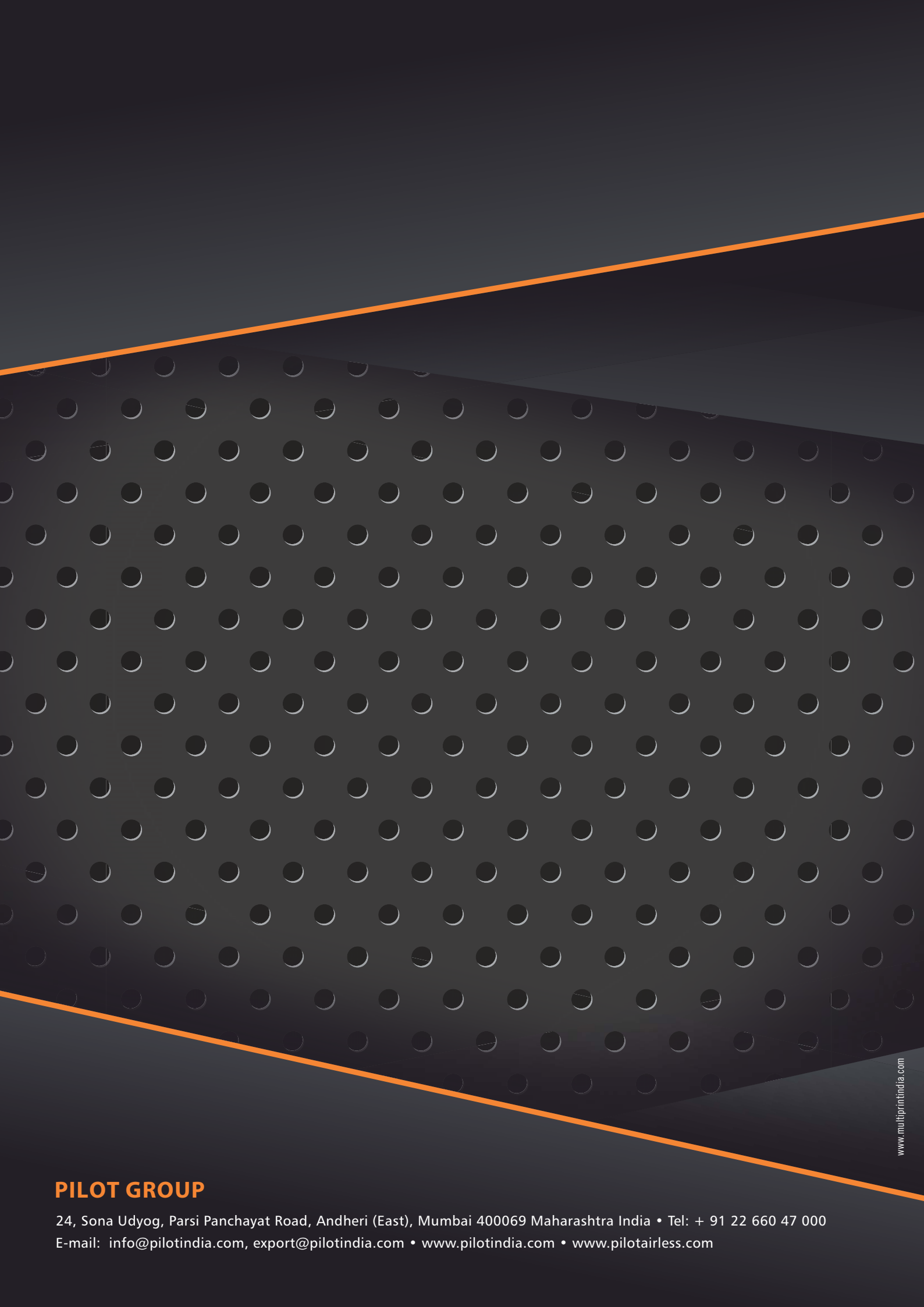
Filter element



High pressure hose



Seals



PILOT GROUP

24, Sona Udyog, Parsi Panchayat Road, Andheri (East), Mumbai 400069 Maharashtra India • Tel: + 91 22 660 47 000
E-mail: info@pilotindia.com, export@pilotindia.com • www.pilotindia.com • www.pilotairless.com